

Purina® Equine Junior® Horse Feed

WITH **OUTLAST®** GASTRIC SUPPORT SUPPLEMENT

COMPLETE FEED WITH HAY BUILT IN FOR WEANLINGS AND YEARLINGS

BALANCED FOR HEALTHY GROWTH

Optimal balance of protein, calories, vitamins & minerals to support proper growth.

FORMULATED FOR CONSISTENT DEVELOPMENT

Built-in hay formulation addresses nutrient variability to support a smooth, steady growth curve.

HEALTHY APPEARANCE

Contains Amplify® High-Fat Nugget and Outlast® Supplement to support body condition and gastric health.

BALANCED ENERGY SOURCES

Including fats, fibers and soluble carbohydrates to help support healthy growth.

HIGHLY DIGESTIBLE PROTEINS

Contains key amino acids for proper development of muscle, bone, skin, hair and hooves.

BUILT-IN FORAGE

Contains high-quality hay, designed to replace hay or pasture in the growing horse's diet.

100% VITAMINS AND MINERALS

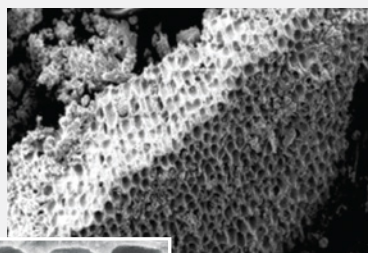
Meets the specific nutritional needs of young horses*, including Calcium, Phosphorus, Copper, Zinc, Selenium and Vitamin E.



OUTLAST® SUPPLEMENT

Decreases in forage intake and thus, saliva production can mean increased risk for gastric discomfort.

Proprietary mineral complex and unique honeycomb structure of Outlast® supplement enhances its capacity to support proper gastric pH.



Electron microscope images showing the porous structure of the proprietary mineral complex



FEED GREATNESS®

* When fed as directed, with free-choice or added salt, based on Nutrient Requirements of Horses, Sixth Revised Edition – 2007, published by the National Research Council.

Purina® Equine Adult® Horse Feed

FEEDING DIRECTIONS

RECOMMENDATIONS FOR THE GROWTH OF YOUR WEANLING

From birth to one year, the average weanling will increase in body weight six to seven times, building bone and muscle at an extremely rapid rate. To support this growth, young horses have increased vitamin, mineral, protein and energy needs. A lack or imbalance of proper nutrients will not support optimal growth or development. That's why it is so important to give your weanling proper nutritional support from the start.

Hay and pasture: Controlling your weanling's roughage intake is critical in its growing years. Hay and pasture vary considerably and can be inconsistent in digestibility and nutrient value. Of particular concern is potential deficit, excess or imbalance of minerals and vitamins.

Winter feeding: In the winter, the amount of feed may need to be increased by 10-15% to offset the increased calorie requirements of maintaining body condition.

FEEDING EQUINE JUNIOR® HORSE FEED WITHOUT FORAGE

Light Breeds - estimated mature weight of approximately 1,000 lbs

GROWTH RATE	WEIGHT OF HORSE IN POUNDS					
	300	400	500	600	700	800
Equine Junior® Horse Feed (lbs/day)*						
Moderate Growth	10.00	11.00	11.50	12.75	14.00	14.50

Large Breeds - estimated mature weight of approximately 1,500 lbs

GROWTH RATE	WEIGHT OF HORSE IN POUNDS							
	600	700	800	900	1,000	1,100	1,200	1,300
Equine Junior® Horse Feed (lbs/day)*								
Moderate Growth	14.00	15.50	17.00	18.00	19.00	20.00	21.00	22.00

*When fed as complete feed without forage.

Every horse is unique. That's why the recommended feeding rates Purina suggests for Equine Junior® horse feed may need to be increased or decreased by up to 10-15% to keep your growing horse in optimal body condition.

A 6 lb meal of Equine Junior® Horse Feed supplies a full serving of Outlast® Supplement.

FEEDING EQUINE JUNIOR® HORSE FEED WITH FORAGE

Purina® Equine Junior® horse feed is designed to be fed as a complete feed because it's formulated with high-quality roughage. If necessary, you may also feed with good-quality hay or pasture – up to a maximum of 5 lbs per day – to relieve boredom. When fed with hay, reduce about 1.0 lb of feed for each 1.5-2.0 lbs of hay offered. For best results, do not feed more than 1.0 lb of hay per 100 lbs of your horse's body weight per day when feeding Purina® Equine Junior® horse feed.

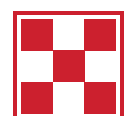
Do not feed less than 0.6 lbs per 100 lbs body weight of Purina® Equine Junior® horse feed per day to meet minimum daily requirements of protein, vitamins and minerals.

NUTRIENT COMPOSITION

Crude Protein (min)	14.50 %
Lysine (min)	0.80 %
Methionine (min)	0.25 %
Threonine (min)	0.55 %
Crude Fat (min)	5.50 %
Crude Fiber (max)	16.00 %
Acid Detergent Fiber (ADF) (max)	22.00%
Neutral Detergent Fiber (NDF) (max)	38.00%
Dietary Starch (max)	14.00 %
Sugars (max)	9.00 %
Calcium (Ca) (min)	0.80 %
Calcium (Ca) (max)	1.30 %
Phosphorus (P) (min)	0.55 %
Copper (Cu) (min)	60.00 ppm
Selenium (Se) (min)	0.30 ppm
Zinc (Zn) (min)	220.00 ppm
Vitamin A (min)	3,500 IU/lb
Vitamin D ₃ (min)	600 IU/lb
Vitamin E (min)	150 IU/lb



For more information, contact your local Purina retailer or visit purinamills.com/horse-feed.



FEED GREATNESS®